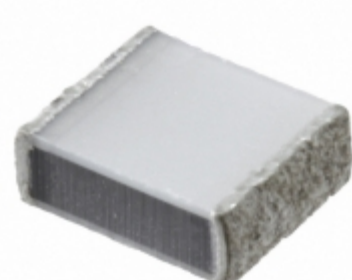


LDEPD1470KA5N00



Part Number: [LDEPD1470KA5N00](#)
Manufacturer: [KEMET](#)
Description: CAP FILM 4700PF 10% 630VDC 2220
Data sheet: [PDF LDE Series Datasheet](#)

RoHS Status: Lead free / RoHS Compliant
Ship From: Hong Kong
Shipment Way: DHL/Fedex/TNT/UPS/EMS

Images are for reference only.
 See Product Specifications for product details.
 Buy LDEPD1470KA5N00 with confidence from
 Component-World.HK, 1 Year Warranty

[Request For Quotation](#)

PRODUCT PARAMETER

Part Number	LDEPD1470KA5N00	Manufacturer	KEMET
Description	CAP FILM 4700PF 10% 630VDC 2220	Lead Free Status / RoHS Status	Lead free / RoHS Compliant
Quantity Available	137769 pcs	Data sheet	LDE Series Datasheet
Category	Capacitors	Voltage Rating - DC	630V
Voltage Rating - AC	200V	Tolerance	±10%
Termination	Solder Pads	Size / Dimension	0.236" L x 0.197" W (6.00mm x 5.00mm)
Series	LDE	Ratings	AEC-Q200
Packaging	Original-Reel®	Package / Case	2220 (5750 Metric)
Other Names	399-12898-6	Operating Temperature	-55°C ~ 125°C
Mounting Type	Surface Mount	Moisture Sensitivity Level (MSL)	2A (4 Weeks)
Manufacturer Standard Lead Time	47 Weeks	Lead Spacing	-
Lead Free Status / RoHS Status	Lead free / RoHS Compliant	Height - Seated (Max)	0.079" (2.00mm)
Features	High Temperature	Dielectric Material	Polyester, Polyethylene Naphthalate (PEN), Metallized - Stacked
Detailed Description	4700pF Film Capacitor 200V 630V Polyester, Polyethylene Naphthalate (PEN), Metallized - Stacked 2220 (5750 Metric)	Capacitance	4700pF
Applications	Automotive		

Component-World.com is a Reliable Stocking Distributor of Electronic Components. We specialize in all KEMET series electronic components. We have 137769 pieces of KEMET LDEPD1470KA5N00 in stock available now. Request a quote from electronics components distributor at Component-World.com, our sales team will contact you within 24 hours.
 RFQ Email: info@Components-World.com

RELATED PRODUCTS

	Part#: LDEPD1100KA5N00 Description: CAP FILM 1000PF 10% 630VDC 2220	Manufacturers: KEMET	RFQ
	Part#: LDEPE2330KA5N00 Description: CAP FILM 0.033UF 10% 630VDC 2824	Manufacturers: KEMET	RFQ
	Part#: LDEMG3330KA5N00 Description: CAP FILM 0.33UF 10% 400VDC 5040	Manufacturers: KEMET	RFQ
	Part#: LDEPD2100KA5N00 Description: CAP FILM 10000PF 10% 630VDC 2220	Manufacturers: KEMET	RFQ
	Part#: LDEME3100KA5N00 Description: CAP FILM 0.1UF 10% 400VDC 2824	Manufacturers: KEMET	RFQ
	Part#: LDEPH3220KA5N00 Description: CAP FILM 0.22UF 10% 630VDC 6054	Manufacturers: KEMET	RFQ
	Part#: LDEMF3150JA5N00 Description: CAP FILM 0.15UF 5% 400VDC 4030	Manufacturers: KEMET	RFQ
	Part#: LDEPD1220KA5N00 Description: CAP FILM 2200PF 10% 630VDC 2220	Manufacturers: KEMET	RFQ
	Part#: LDEMG3220KA5N00 Description: CAP FILM 0.22UF 10% 400VDC 5040	Manufacturers: KEMET	RFQ
	Part#: LDEQD1100KA5N00 Description: CAP FILM 1000PF 10% 1KVDC 2220	Manufacturers: KEMET	RFQ
	Part#: LDEMH3470KA5N00 Description: CAP FILM 0.47UF 10% 400VDC 6054	Manufacturers: KEMET	RFQ
	Part#: LDEQD1220KA5N00 Description: CAP FILM 2200PF 10% 1KVDC 2220	Manufacturers: KEMET	RFQ
	Part#: LDEPF2470KA5N00 Description: CAP FILM 0.047UF 10% 630VDC 4030	Manufacturers: KEMET	RFQ
	Part#: LDEME3100JA5N00 Description: CAP FILM 0.1UF 5% 400VDC 2824	Manufacturers: KEMET	RFQ
	Part#: LDEPF3100KA0N00 Description: CAP FILM 0.1UF 10% 630VDC 4030	Manufacturers: KEMET	RFQ
	Part#: LDEPE2220KA5N00 Description: CAP FILM 0.022UF 10% 630VDC 2824	Manufacturers: KEMET	RFQ
	Part#: LDEME2680KA5N00 Description: CAP FILM 0.068UF 10% 400VDC 2824	Manufacturers: KEMET	RFQ
	Part#: LDEPF2680KA5N00 Description: CAP FILM 0.068UF 10% 630VDC 4030	Manufacturers: KEMET	RFQ
	Part#: LDEPD2100JA5N00 Description: CAP FILM 10000PF 5% 630VDC 2220	Manufacturers: KEMET	RFQ
	Part#: LDEPD1330KA5N00 Description: CAP FILM 3300PF 10% 630VDC 2220	Manufacturers: KEMET	RFQ

Related keywords for LDEPD1470KA5N00

KEMET LDEPD1470KA5N00	LDEPD1470KA5N00 distributor	LDEPD1470KA5N00 supplier	LDEPD1470KA5N00 price
LDEPD1470KA5N00 download datasheet	LDEPD1470KA5N00 datasheet	LDEPD1470KA5N00 stock	buy LDEPD1470KA5N00
KEMET LDEPD1470KA5N00	Kemet [MIL] LDEPD1470KA5N00		